



Caledonian

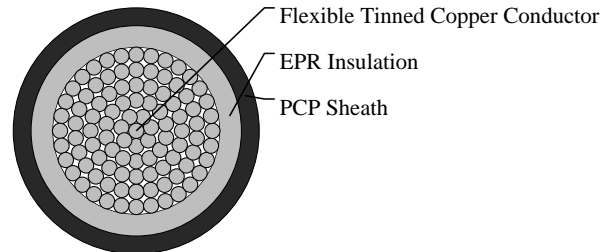
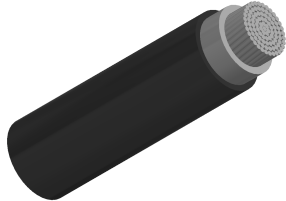
Railway Cables

www.caledonian-cables.com

marketing@caledonian-cables.com

NSGAFOU Cables

RF602-NSGAFOU-1G185S



APPLICATIONS

The cables are designed for use in switch cabinets, wiring of devices, trains and buses as well as in dry rooms.

STANDARDS

DIN VDE 0250-602

VOLTAGE RATING

1.8/3 KV

CABLE CONSTRUCTION

Conductors: Flexible tinned copper to IEC 60228 class 5

Insulation: EPR type 3G13.

Outer sheath: PCP type 5GM3.

PHYSICAL AND THERMAL PROPERTIES

Minimum Bending Radius: 4 x OD

Temperature Range: -25°C to +80°C (during operation); -10°C to +60°C (during installation)

DIMENSION AND PARAMETERS

No. of Cores × Cross-sectional Area	No./Nominal Diameter of Strands	Nominal Insulation Thickness	Nom. Overall Diameter	Approx. Weight	Max. DC Resistance at 20°C	Current Rating
No. × mm ²	no./mm	mm	mm	kg/km	Ω/km	A
1 x 185	925/0.5	2.4	25.6	2050	0.109	639



Highly Flexible



Impact Resistant



Laid In Ducts



Oil Resistant



Water Resistant